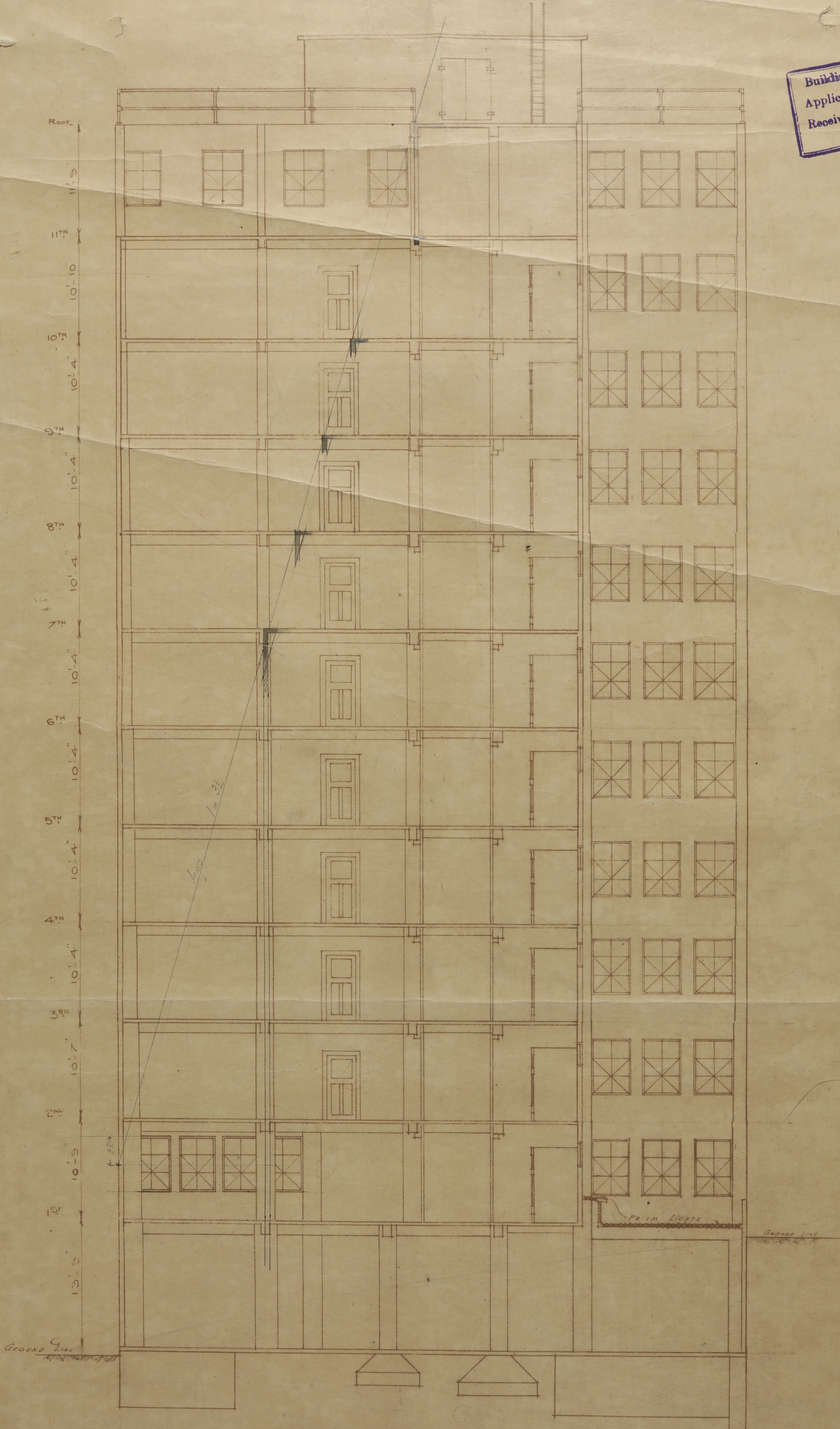


Building Surveyors Office
 Application No. 5826
 Received 5/12/23



SECTION B.B.

TEMPLE COURT

Scale Eight feet to One inch

Tracing N ^o	2267
Print N ^o	
Date	

Crainger Little Barlow & Hawkins
 Architects A.R.V.I.A. A.R.I.B.A.
 Collins House Collins St. Melb.

Building Surveyors Office
 Application No. 5826
 Received 5/12/23



Mail of Light
 Court in
 Bank Place
 Bldg
 (Robinson)

TEMPLE COURT.

Tracing No	2263
Print No	
Date	

Scale Eight feet to one inch.

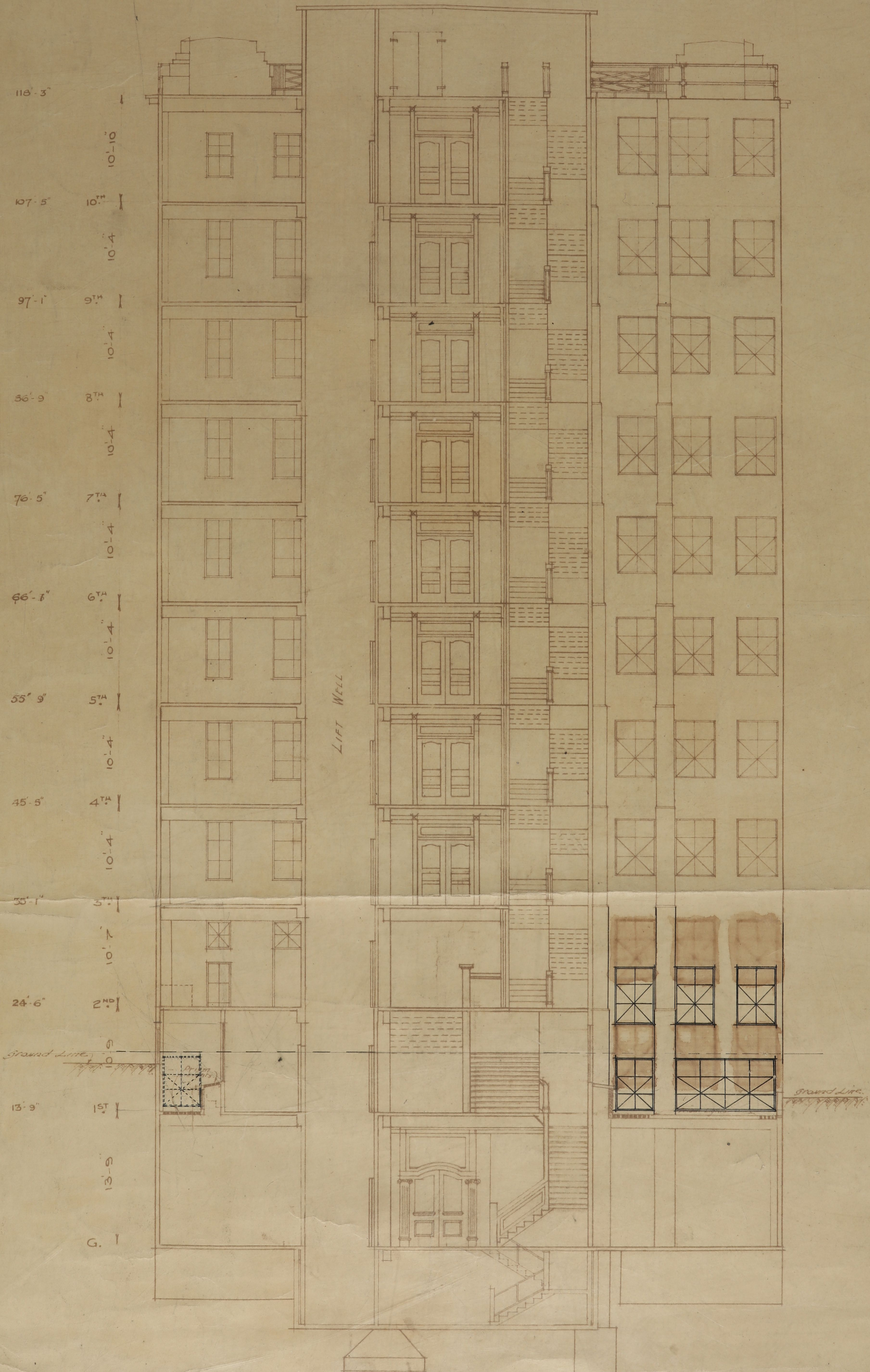
Granger Little Barlow & Hawkins
 Architects 44 VICTORIA ARCADE
 Collins House Collins St Melbourne.

SET

TEMPLE COURT

SCALE - EIGHT FEET TO ONE INCH.

Building ~~Surveyors~~
 Application No. 5826
 Received 5/12/22



Tracing N^o 2265
 Print N^o
 Date.

SECTION D-D

Cranger Little Barlow & Howkins
 Architects 11 ARVIA MIA ARIBA.
 Collins House Collins St. Meib.